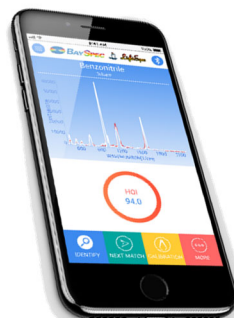


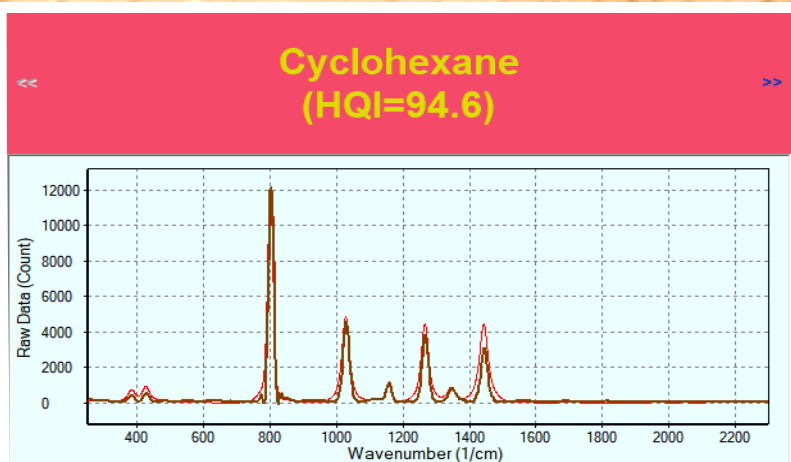
UAV + UGV + Nano LB™



Nano LB™ - Scope out the landscape with miniature molecular sensors from BaySpec, Inc.



Nano LB™ - Molecular intelligence the size of a key fob.



Made in the U.S.A.



BaySpec, Inc.

1101 McKay Drive | San Jose, CA 95131 | USA
(408) 512-5928 | www.bayspec.com

Key Specifications

Model	Nano-LB™	Belt-Wearable-2™
		
Built-in Light Source	Laser	
Probing Power	~ 80 mW	
Spectral Range	300-2000 cm ⁻¹	300-2500 cm ⁻¹
Resolution	15-19 cm ⁻¹ (Rayleigh criteria)	
Weight	63 grams	118 grams
Power	Built-in rechargeable battery; ≥1 continuously working hours per charge	
User Interface	LightSpec App for Smartphone (iOS or Android, and PC)	
Connectivity	Bluetooth, USB 2.0	
Measurement Modes	Easy-access hardware buttons ergonomically arranged on device or through software interface	

TYPICAL APPLICATIONS: Detection of illicit drugs, pesticides, fertilizers, explosive materials, etc.

BaySpec, founded in 2000 with 100% manufacturing in San Jose, California, is a vertically integrated spectral sensing company. BaySpec brings the lab to the sample by designing and manufacturing advanced spectral instruments with an emphasis on light weight and low power consumption. Our miniature UV-VIS-NIR-SWIR spectrometers, chemical sensors, hyperspectral imagers, portable mass spectrometers, and OEM spectral engines and components have been deployed in a wide range of markets such as Safety & Security, Food & Agriculture, Pharmaceuticals, Semiconductor, Healthcare, Telecommunications, and Research & Science.

Made in the U.S.A.



BaySpec, Inc.

1101 McKay Drive | San Jose, CA 95131 | USA
(408) 512-5928 | www.bayspec.com