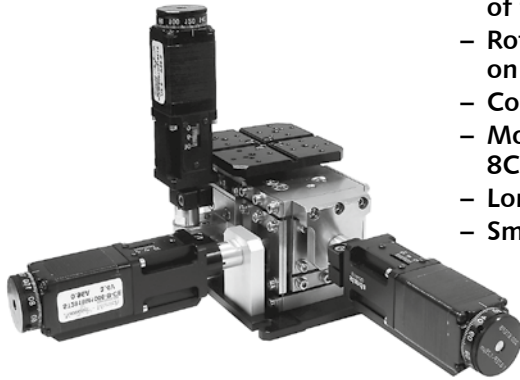
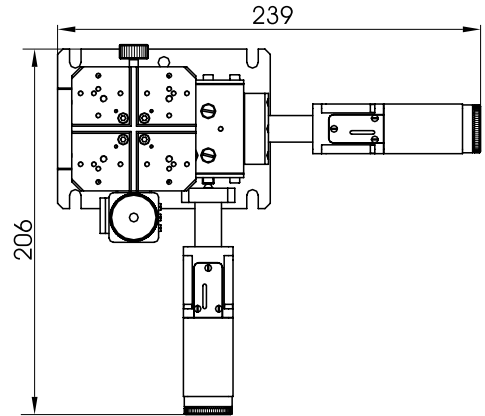
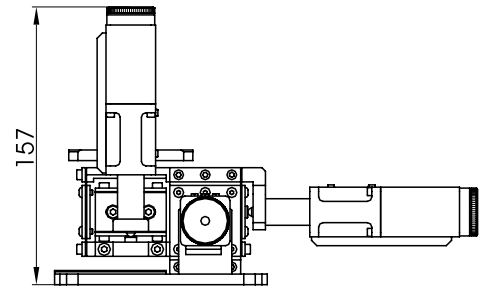


Motorized Fiber Coupling Stage

8MTF2



- Fiber coupling stage of flexure design
- Rotating platform on the top
- Compact block design
- Motorized Actuator 8CMA28-10
- Long-term stability
- Smooth motion



Other dimensions such as 7TF2 (page 7-28)

SPECIFICATIONS

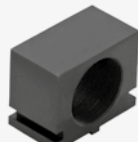
Travel range in each XYZ direction	2 mm
Resolution	0.2 μ m
Cross-Talk	20 μ m/mm
Mechanical stability	flexure design with Stainless Steel Spring
Load capacity	1.5 kg
Type of actuator	8CMA28-10
Cable	1.2 m length cable included
Motor connector	HDB15(M)
Weight	1.6 kg

Accessories for Fiber Coupling Stage

page 7-29



7FA1



7FA2



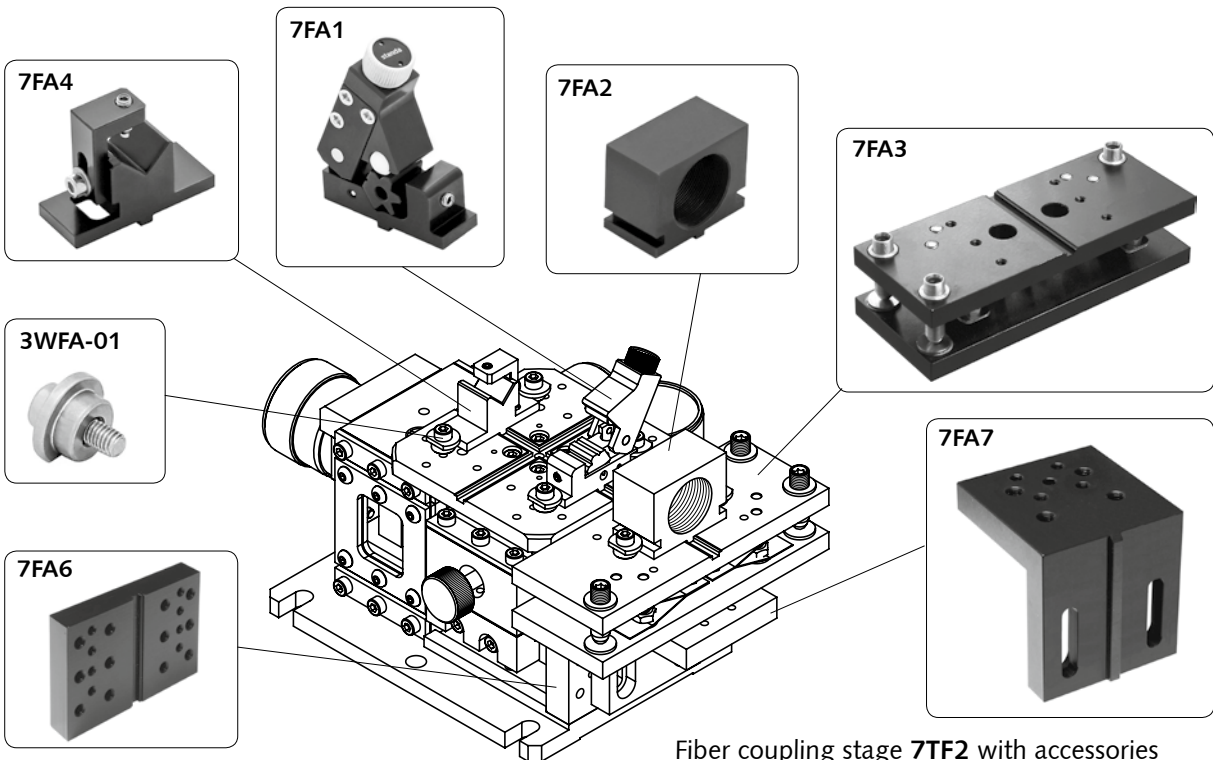
7FA3



7FA4



7FA5



Fiber coupling stage 7TF2 with accessories

