

Applications:

- Triggering applications with TTL output
- Monitoring the output of Q-switched lasers
- Monitoring the output of externally modulated CW lasers

Features:

- Can generate analog or TTL output
- Contains pulse stretch feature
- Contains an adjustable trigger threshold

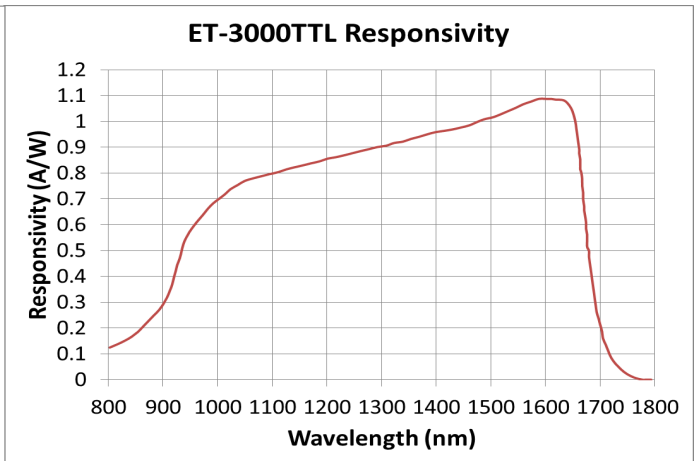
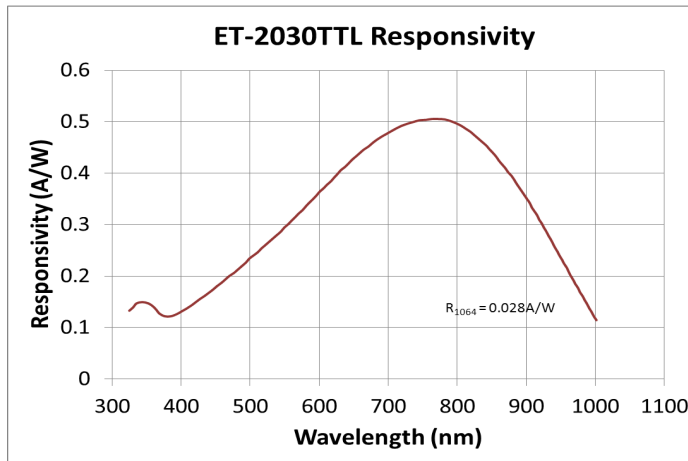


Specifications^a:

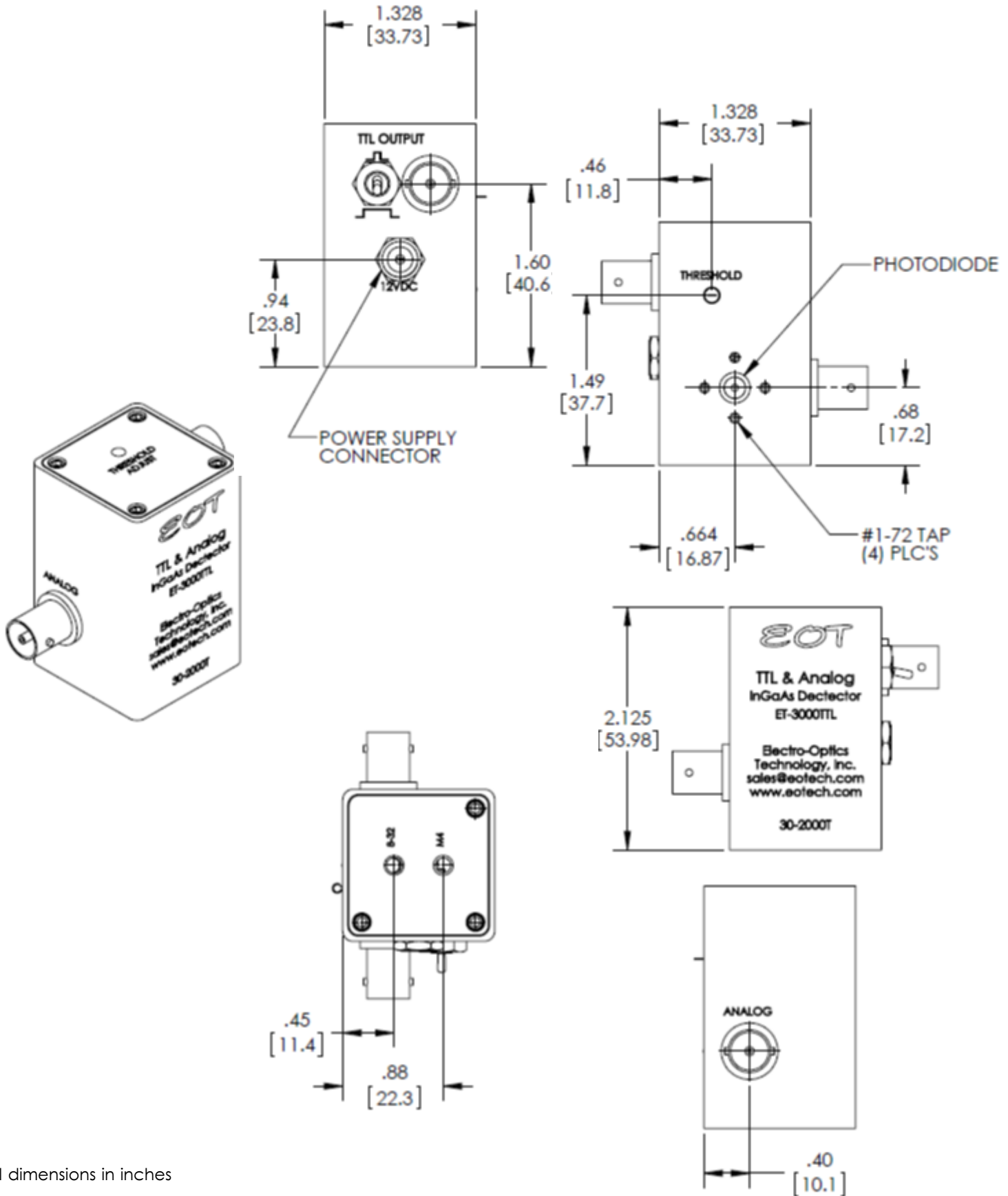
Part No. (Model)	120-10022-0001 (ET-2030TTL)	120-10044-0001 (ET-3000TTL)
Detector Material	Silicon	InGaAs
Power Supply	12VDC	12VDC
Active Area Diameter	400µm	100µm
Dark Current	<0.1nA	<2.0nA
Acceptance Angle (1/2 angle)	10°	20°
Noise Equivalent Power	<0.01pW/√Hz	<0.03pW/√Hz
Mounting (Tapped Holes)	8-32 or M4	8-32 or M4
Analog Output		
Rise Time/Fall Time	<300ps/<300ps	<175ps/<175ps
Responsivity	0.47A/W at 830nm	0.9A/W at 1300nm
Bandwidth	DC-1.2GHz	DC-1.2GHz
Maximum Linear Rating	CW and Pulse current: 3mA	CW current: 5mA CW power: 20mW
Termination	50Ωexternal	50Ωexternal
Output Connector	BNC	BNC
TTL Output		
Rise Time/Fall Time	<8ns/<9ns	<8ns/<9ns
Bandwidth	DC-60MHz	DC-60MHz
Termination	500Ω	500Ω
Adjustable Trigger Threshold	40-500mV	40-500mV
Minimum Detection Pulsewidth	8ns	8ns
Logic High/Logic Low	>3.0V/<0.5V	>3.0V/<0.5V
Pulse Stretch (when enabled)	100ns typical	100ns typical
Output Connector	BNC	BNC

^a Product specifications are subject to change.

Note: All products are RoHS compliant.



ET-2030TTL, 3000TTL Dimensions[∘]:



[∘] All dimensions in inches