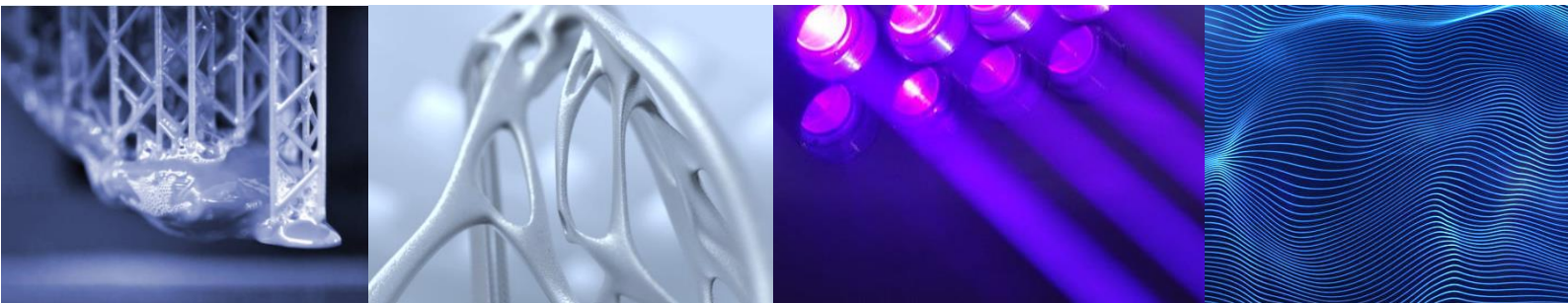
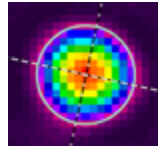
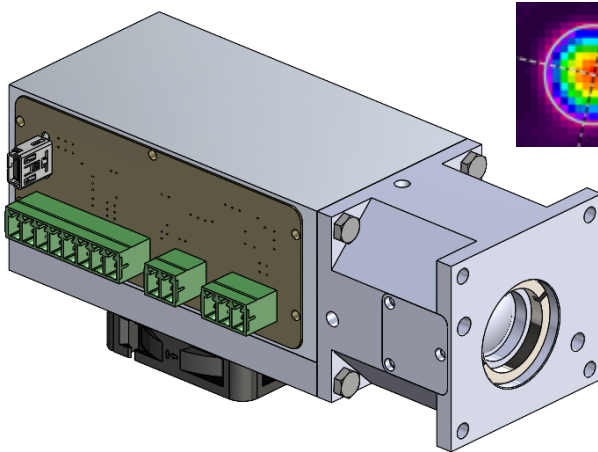


# VYO300

## SINGLE MODE 405nm CW LASER MODULE



*VYO300 is a high-precision laser module for 3D stereolithography, directly integrable into the scanner head, designed to offer high performance with extremely symmetrical spot and fast modulation.*



- Integrated current driver and temperature controller
- USB diagnostic protocol
- Up to 100MHz analog and digital modulation
- Complete and ready for use with a scanning head
- 300mW laser optical power
- Narrow linewidth
- 95% highly symmetric spot

### Optical parameters

Laser type	Semiconductor, single mode
Working mode	Continuous Wave
Center Wavelength	405 nm +/- 5 nm
Spectral bandwidth	2 nm
Output power (laser diode)	300 mW
Beam diameter at output	6mm @1/e <sup>2</sup> free space, collimated
Spatial mode (M <sup>2</sup> )	< 1.4
Polarization ratio	> 100:1
Beam symmetry at focal plane (*)	> 90 %
Spot diameter at focal plane (with F-theta lens EFL 511mm)	~ 60µm @1/e <sup>2</sup>

### Absolute Ratings

Operating Current	< 1A
Operating Voltage	9 V
Cooling	Fan with integrated TEC
Storage temperature	+5 to +50 °C
Operating case temperature	+20 to +30 °C
Relative humidity	30 to 75 % not condensing

### Mechanical Size

122 x 45 x 42mm

Conditions unless otherwise stated: typical parameters at 25°C

\* At focal plane of a focusing lens placed at laser output, at power level > 80%

Lyocon aims to continuously improve its products, so specifications may change without notice. Class 4 Laser product.



LYOCON S.r.l.

HQ: Via Mercalli, 16 – 20019 Settimo M.se (MI) – Italy  
OP: C.so Novara, 161 – 27029 Vigevano (PV) – Italy

Phone: +39 0381 453792  
Fax: +39 0381 455213

E-mail: [Info@lyocon.com](mailto:Info@lyocon.com)  
Web: [www.lyocon.com](http://www.lyocon.com)